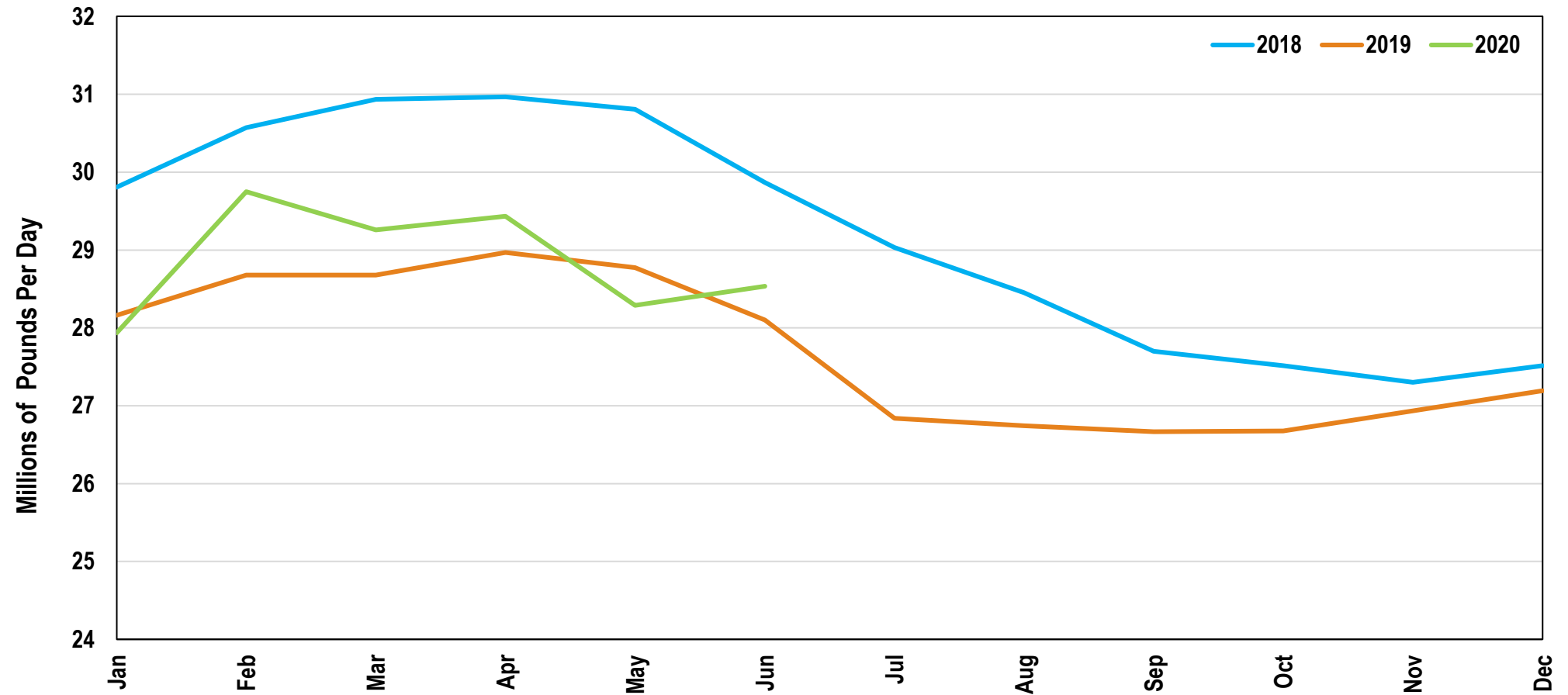
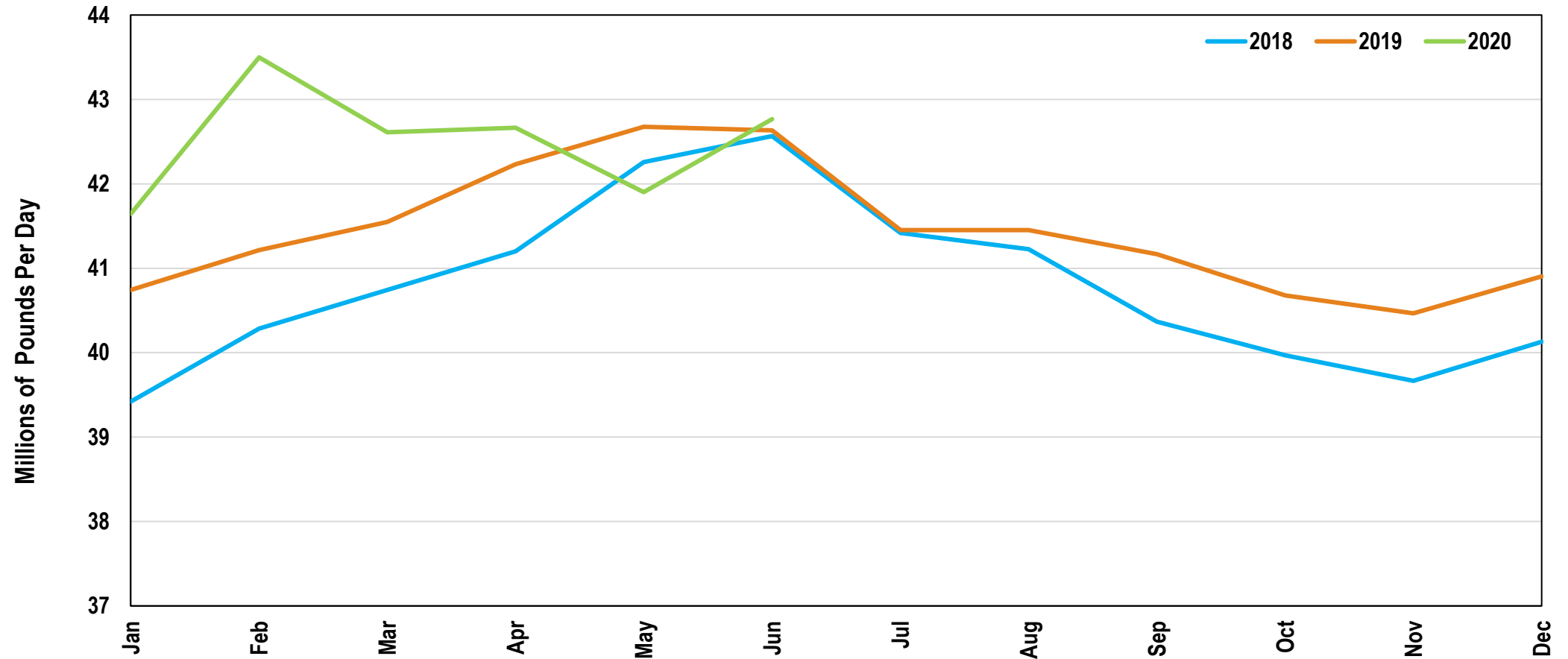


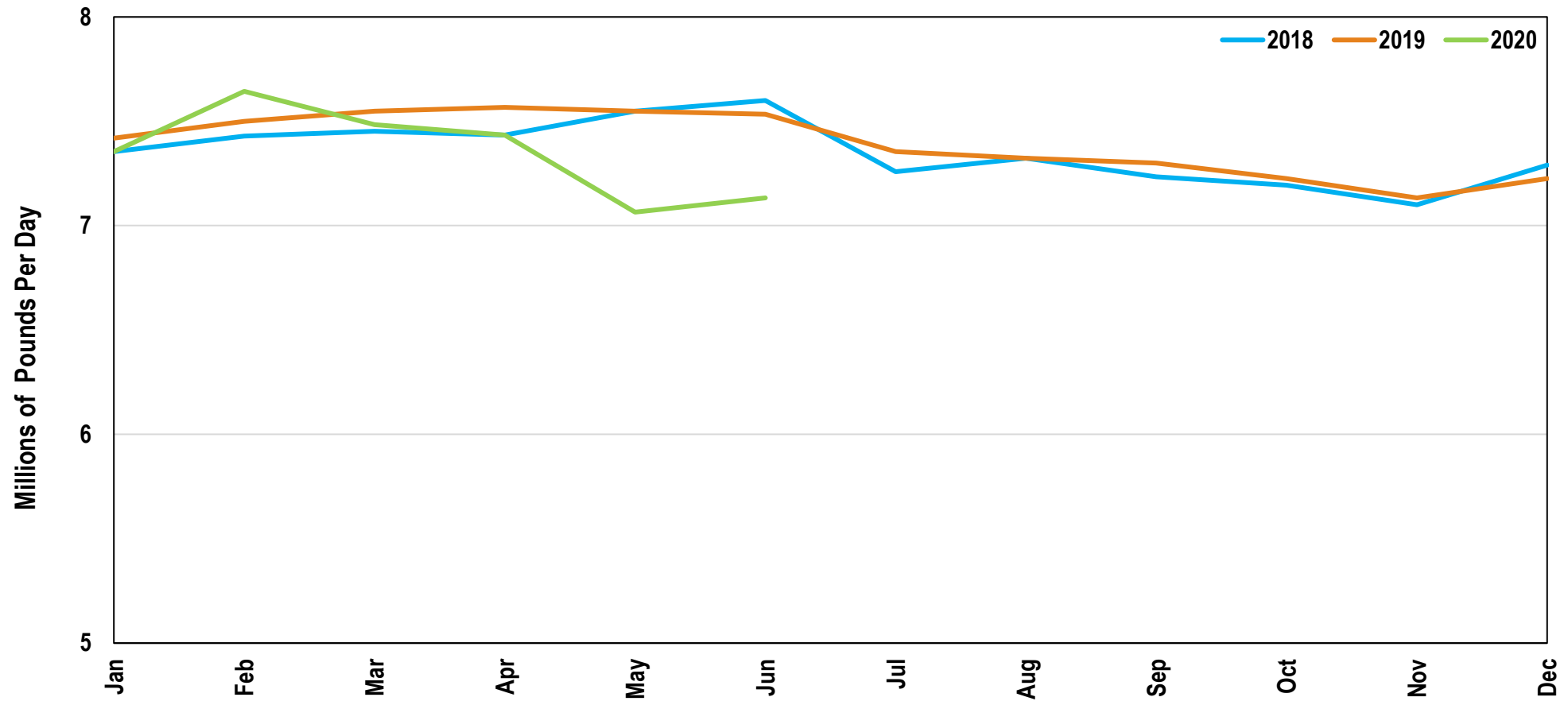
# Pennsylvania milk production



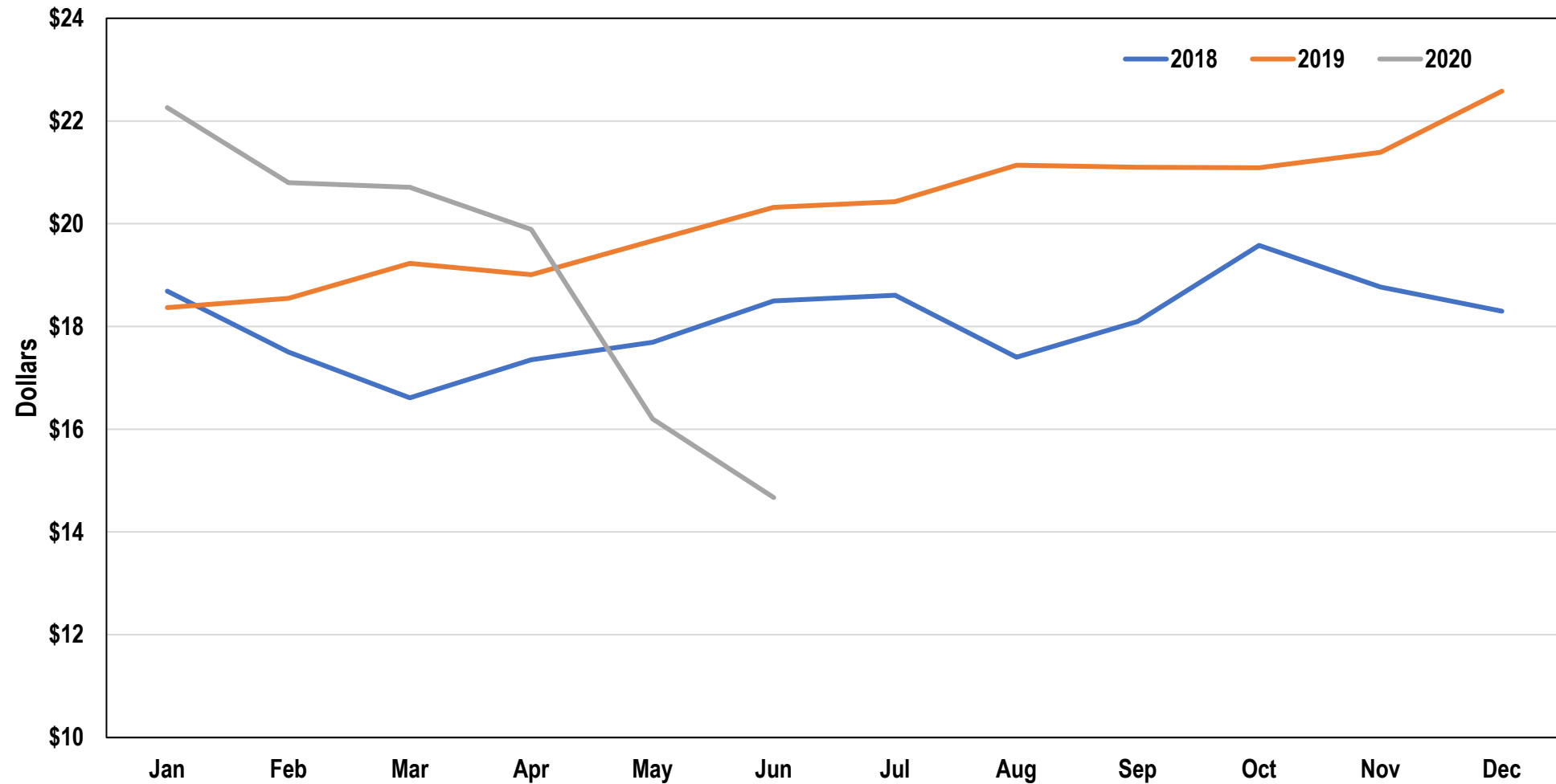
# New York milk production



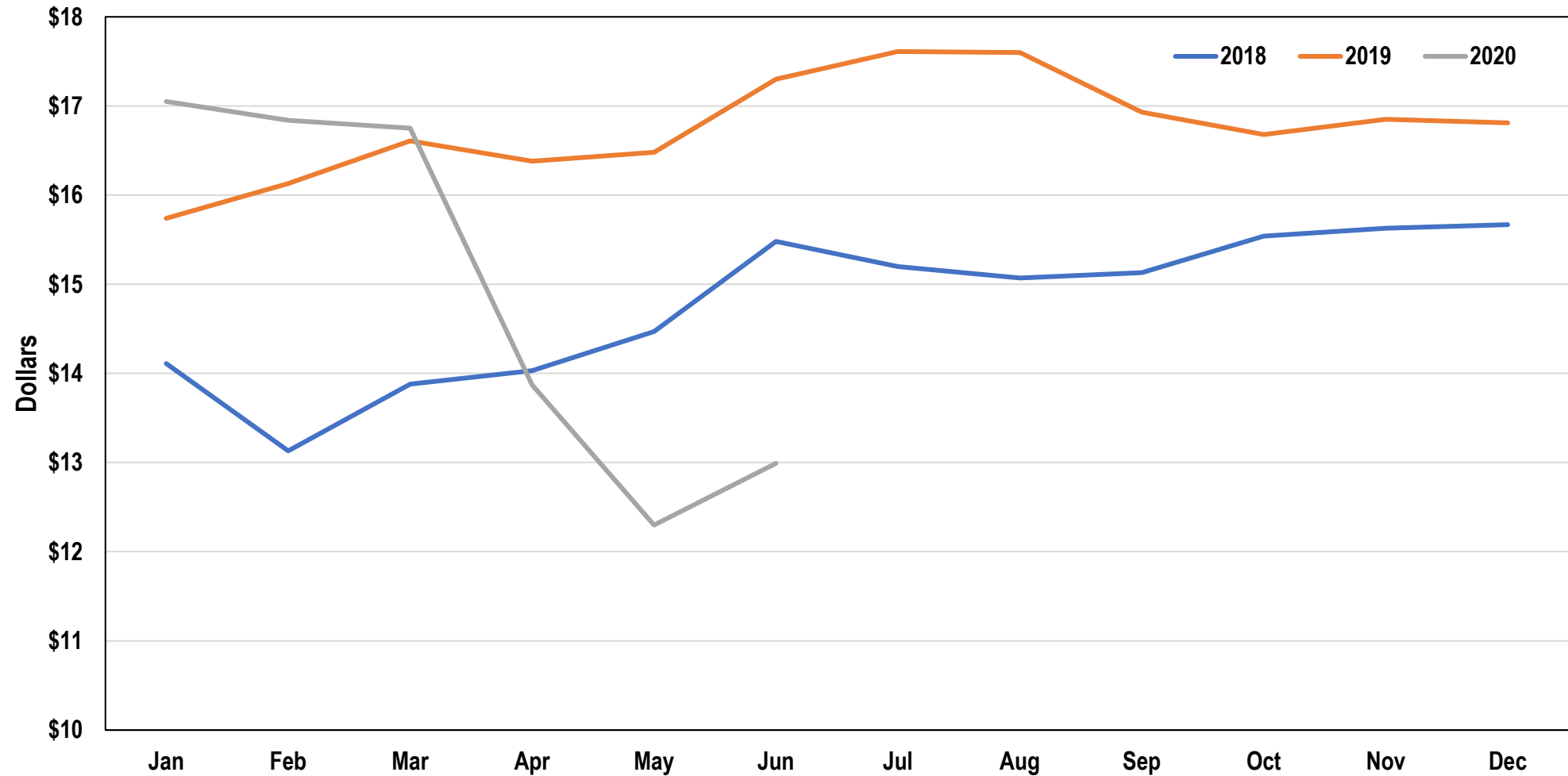
# Vermont milk production



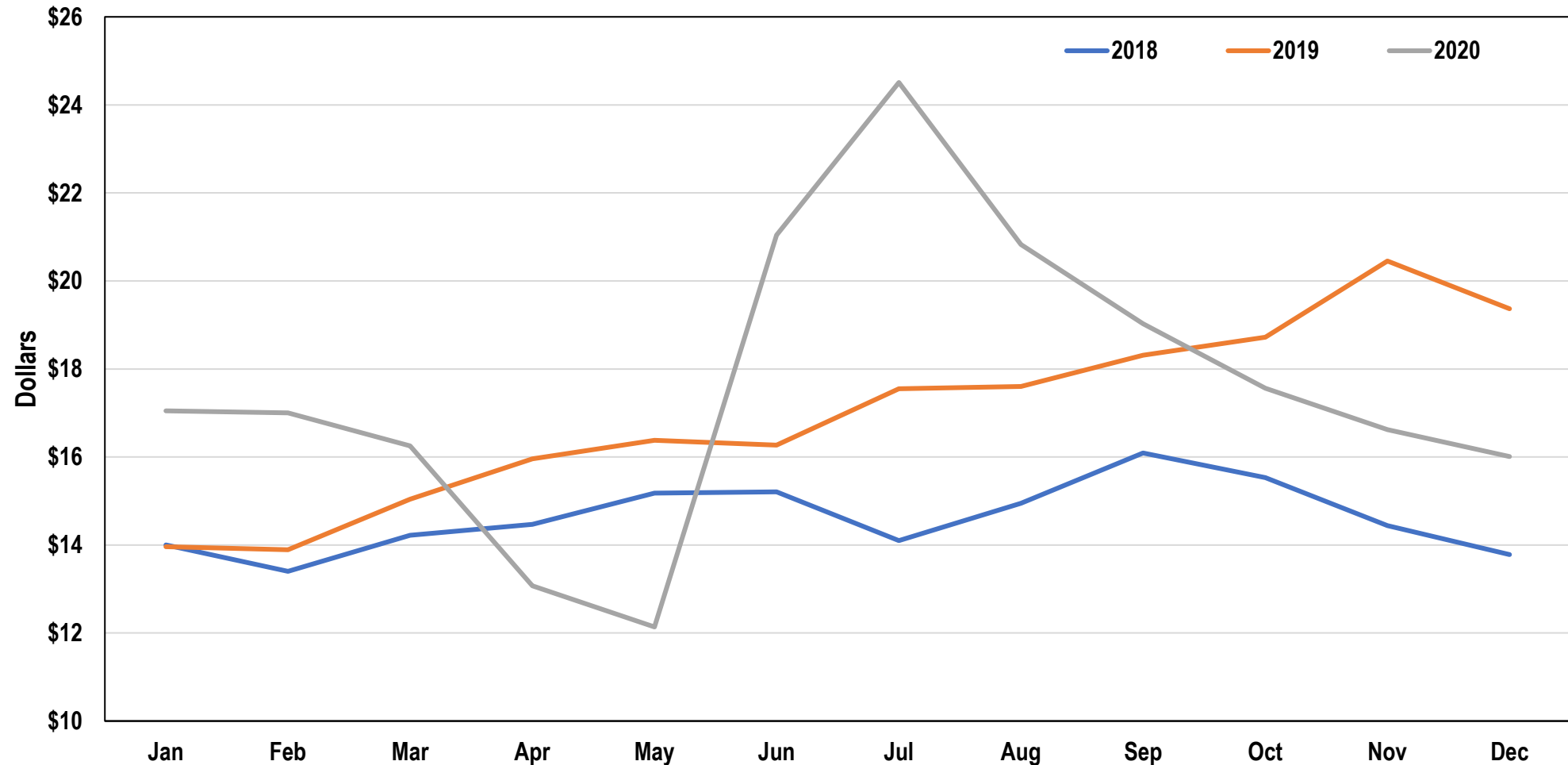
# Federal Order 1 Class I Price



# Federal Order 1 Class II Price



# Federal Order 1 Class III Price

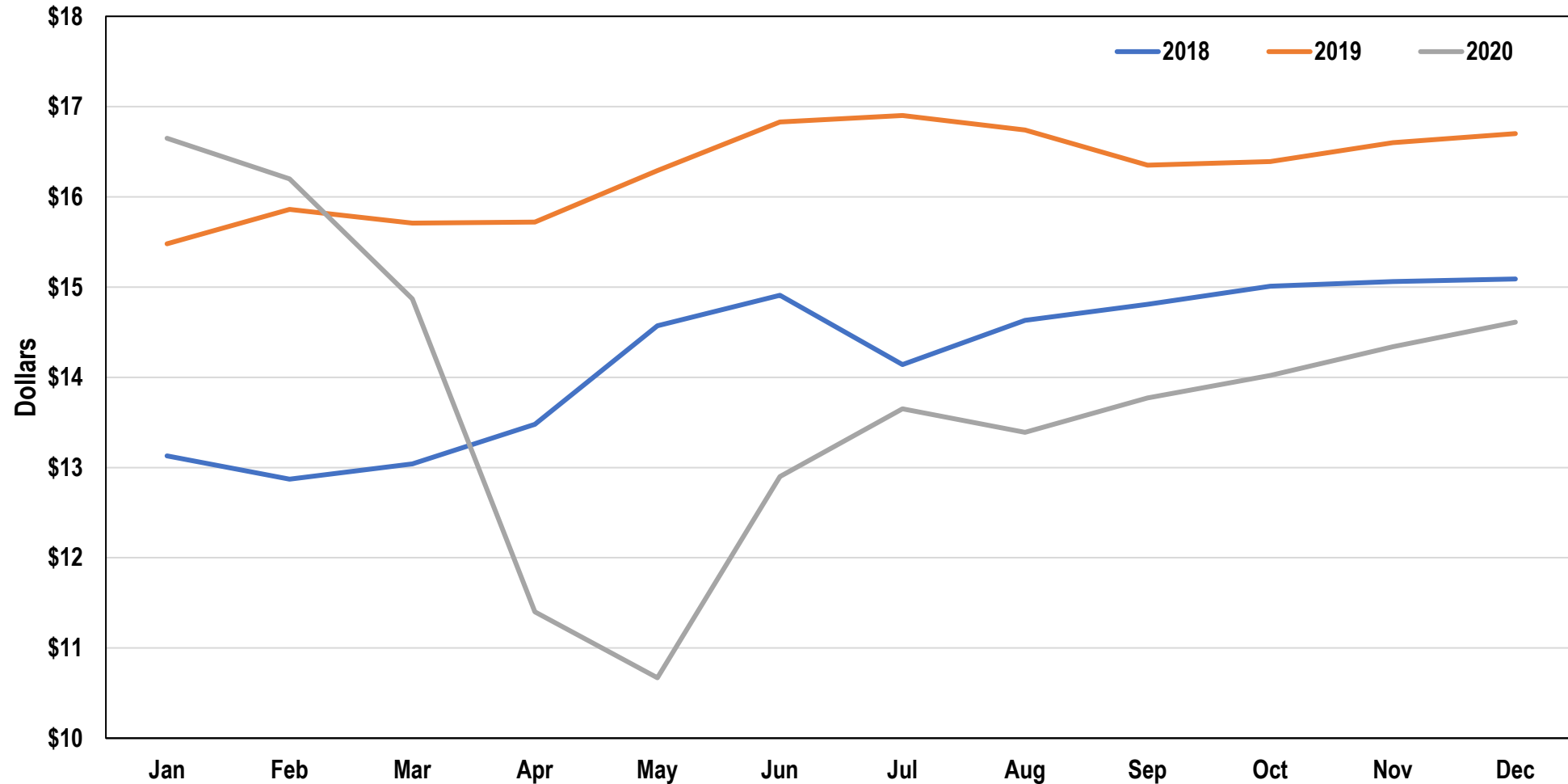


Submitted: August 6, 2020

Jul-Dec 2020 projections based on CME

PADC Exhibit 7

# Federal Order 1 Class IV Price

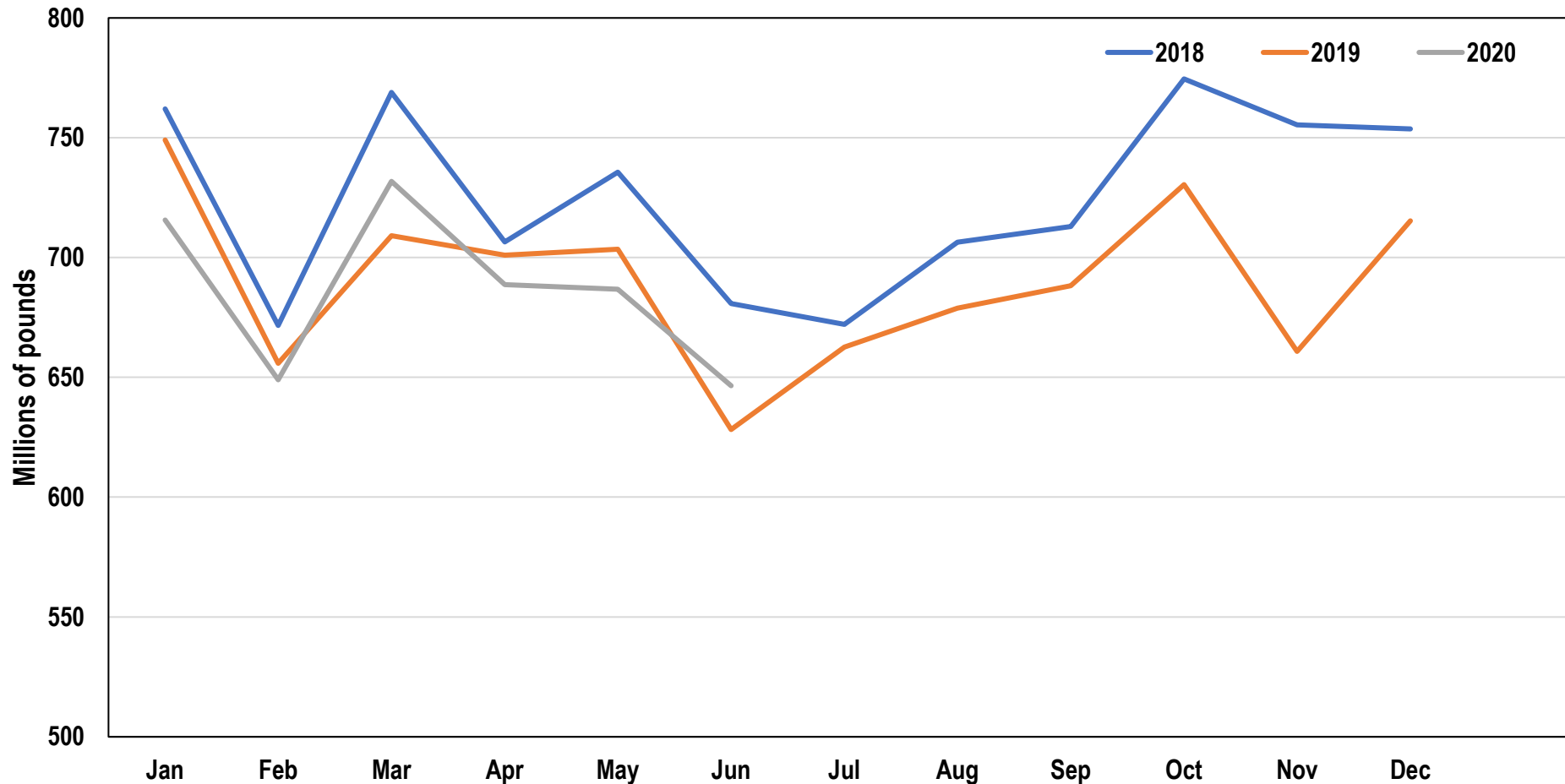


# Class III Price for Milk

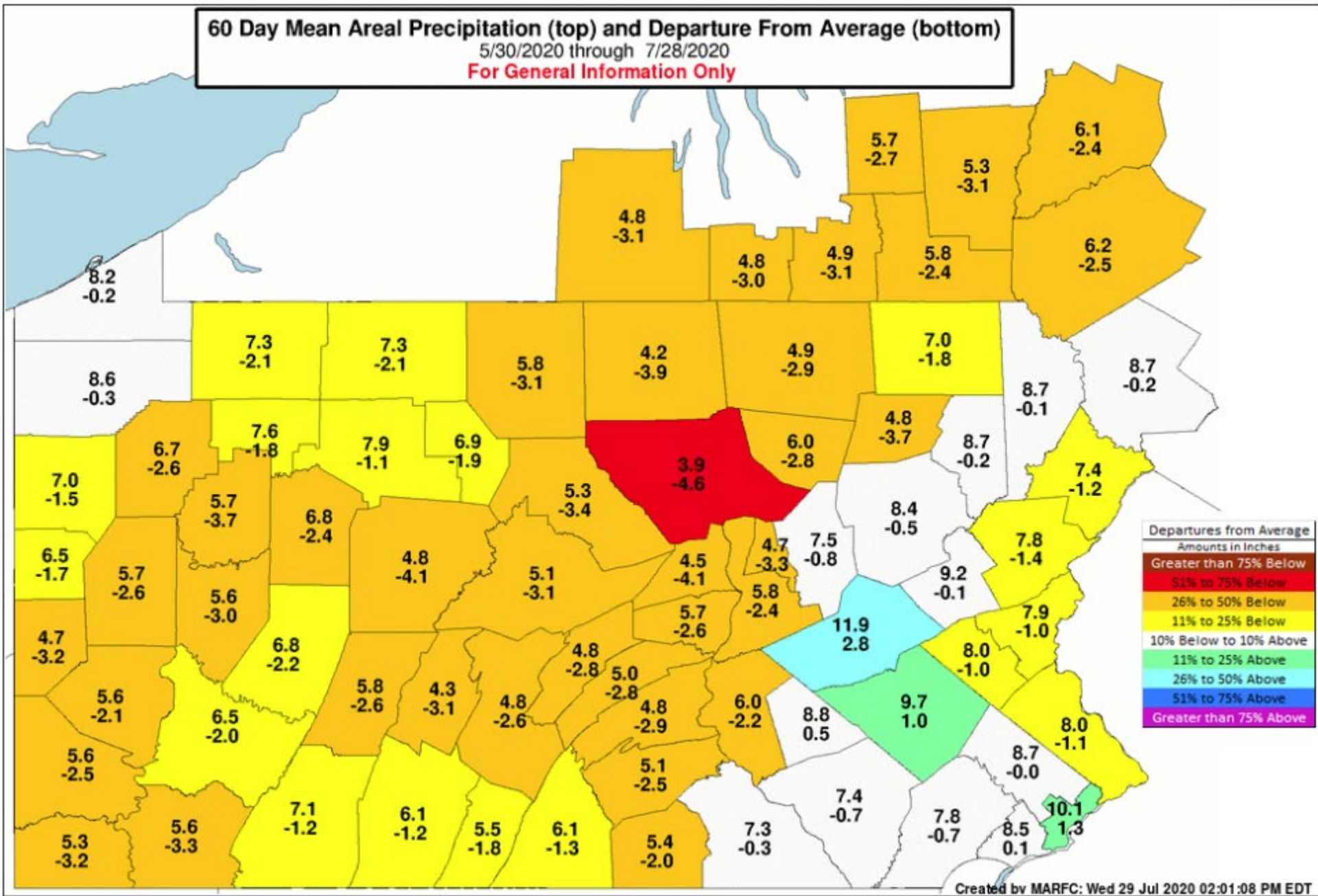
Table A16. Order No. 1—Class III Price for Milk Containing 3.5 Percent Butterfat*#														<a href="#">Index</a>
Year	Jan	Feb	Mar	Apr	May	Jun	Jul	Aug	Sep	Oct	Nov	Dec	Average	
	dollars per hundredweight													
2010	14.50	14.28	12.78	12.92	13.38	13.62	13.74	15.18	16.26	16.94	15.44	13.83	14.41	
2011	13.48	17.00	19.40	16.87	16.52	19.11	21.39	21.67	19.07	18.03	19.07	18.77	18.37	
2012	17.05	16.06	15.72	15.72	15.23	15.63	16.68	17.73	19.00	21.02	20.83	18.66	17.44	
2013	18.14	17.25	16.93	17.59	18.52	18.02	17.38	17.91	18.14	18.22	18.83	18.95	17.99	
2014	21.15	23.35	23.33	24.31	22.57	21.36	21.60	22.25	24.60	23.82	21.94	17.82	22.34	
2015	16.18	15.46	15.56	15.81	16.19	16.72	16.33	16.27	15.82	15.46	15.30	14.44	15.80	
2016	13.72	13.80	13.74	13.63	12.76	13.22	15.24	16.91	16.39	14.82	16.76	17.40	14.87	
2017	16.77	16.88	15.81	15.22	15.57	16.44	15.45	16.57	16.36	16.69	16.88	15.44	16.17	
2018	14.00	13.40	14.22	14.47	15.18	15.21	14.10	14.95	16.09	15.53	14.44	13.78	14.61	
2019	13.96	13.89	15.04	15.96	16.38	16.27	17.55	17.60	18.31	18.72	20.45	19.37	16.96	
2020	17.05	17.00	16.25	13.07	12.14	21.04								
* Equivalent Prices, computed pursuant to 7 CFR, Section 1000.54 for the month of September 2013.														
# Prices calculated using the equivalent pricing constituents for weeks ending October 5 and 12 and the prices published in AMS's National Dairy Product Sales Report for weeks ending October 19 and 26 for the month of October 2013.														



# Federal Order 1 Class I Volume



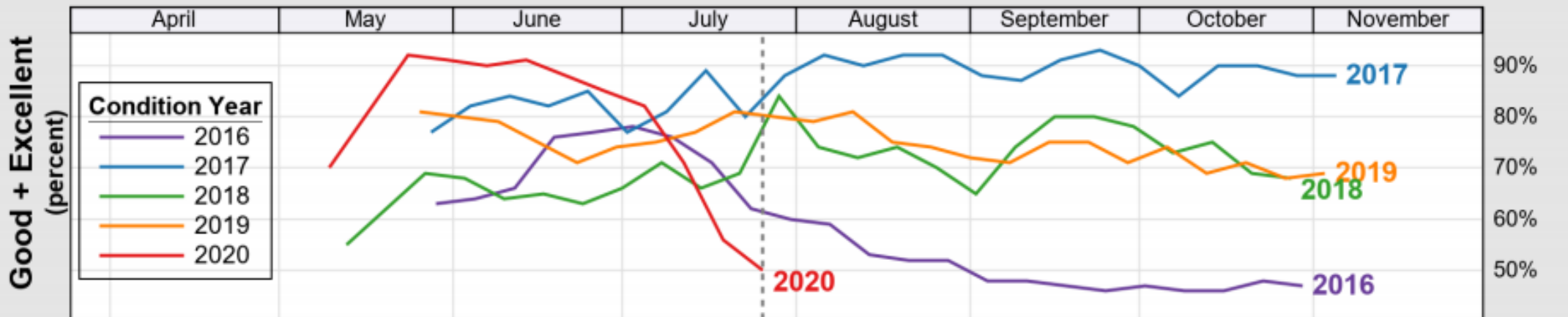
**Total volume by year**  
2018: 8,700.8 million lbs.  
2019: 8,283.1 million lbs.



USDA

### Crop Progress and Condition: Corn in Pennsylvania , 2020

NASS



[https://www.nass.usda.gov/Charts\\_and\\_Maps/Crop\\_Progress\\_&\\_Condition/2020/index.php](https://www.nass.usda.gov/Charts_and_Maps/Crop_Progress_&_Condition/2020/index.php)