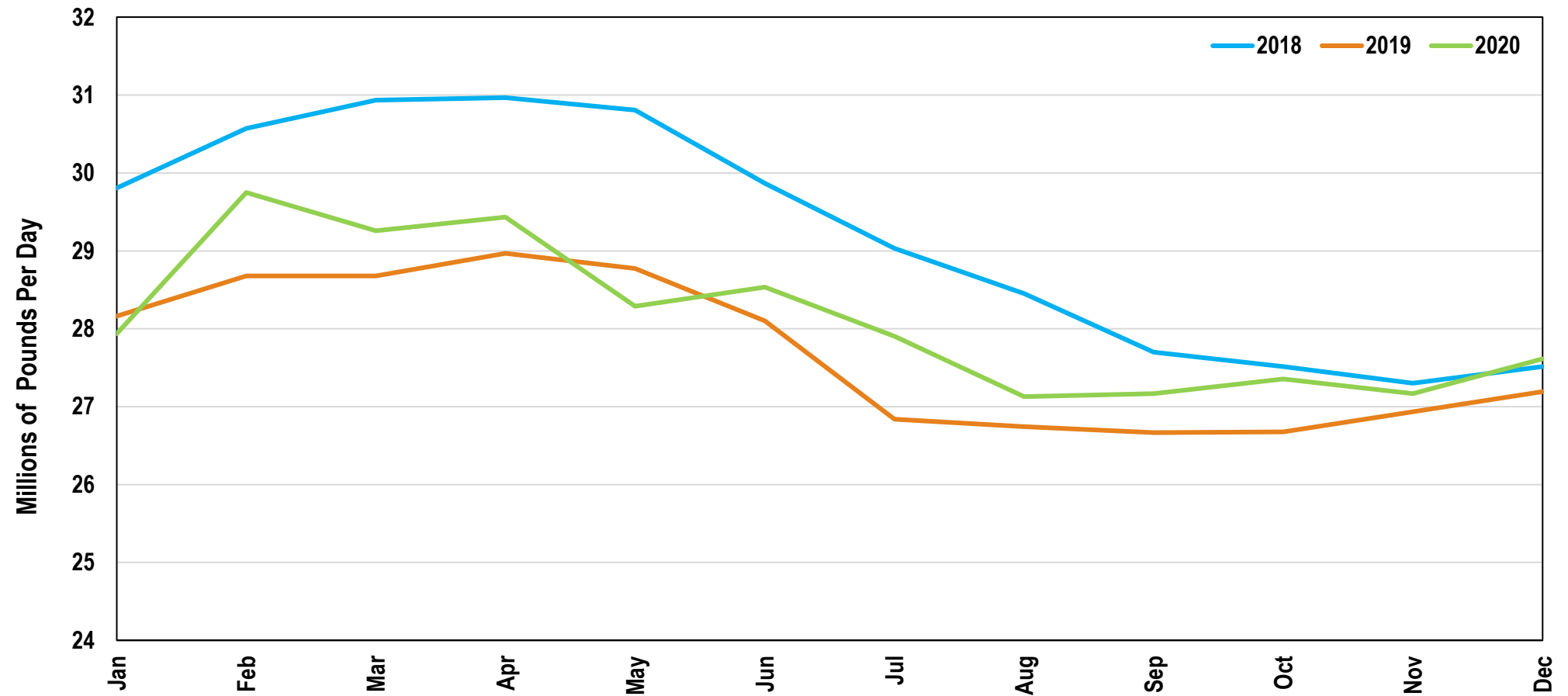


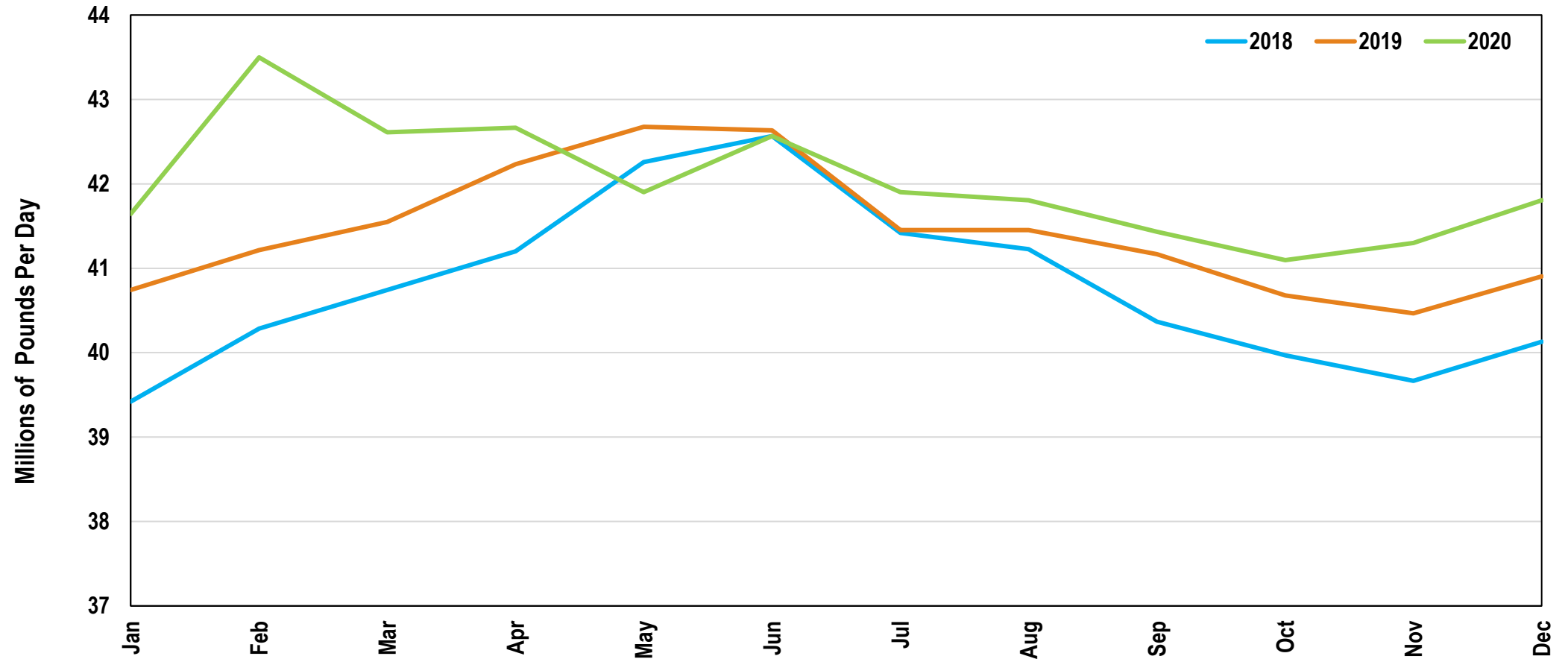
Pennsylvania milk production



Submitted: February 5, 2021

PADC Exhibit 2

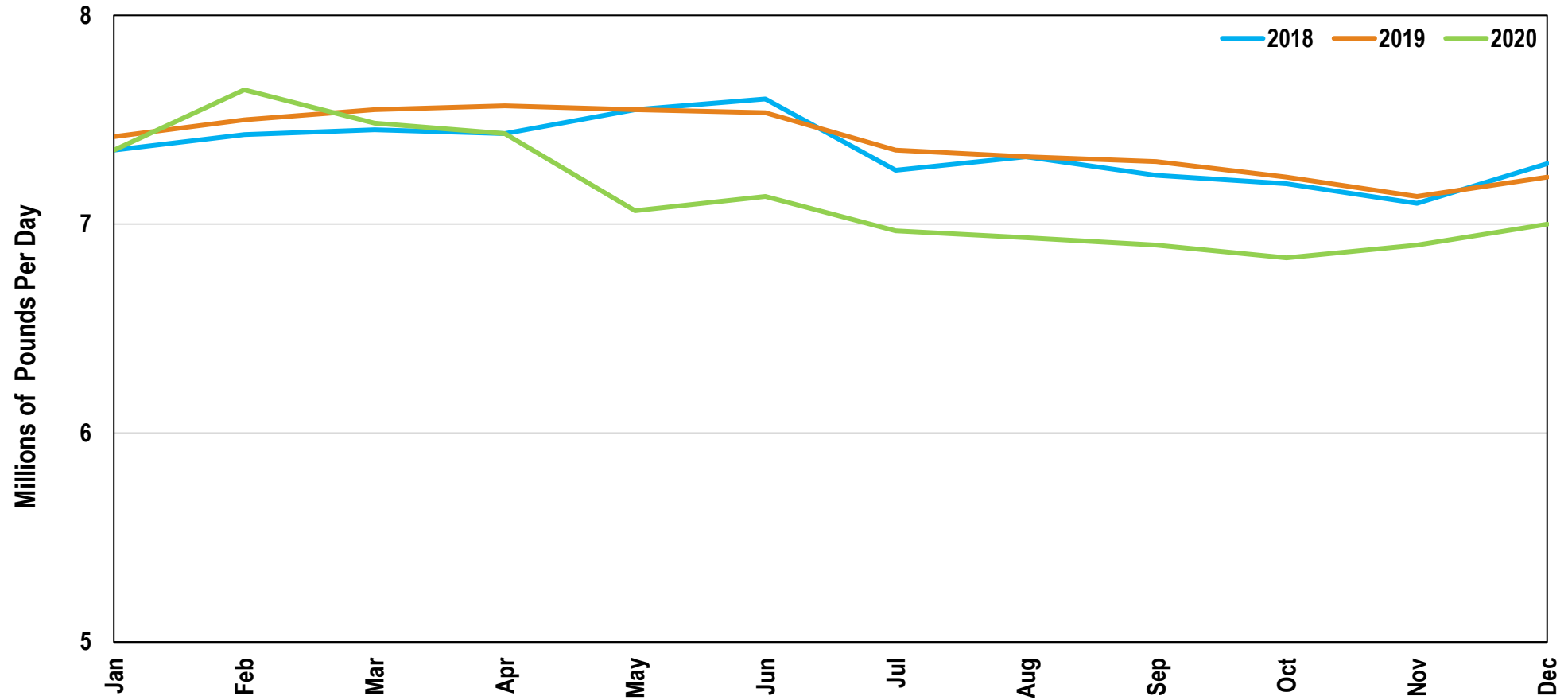
New York milk production



Submitted: February 5, 2021

PADC Exhibit 3

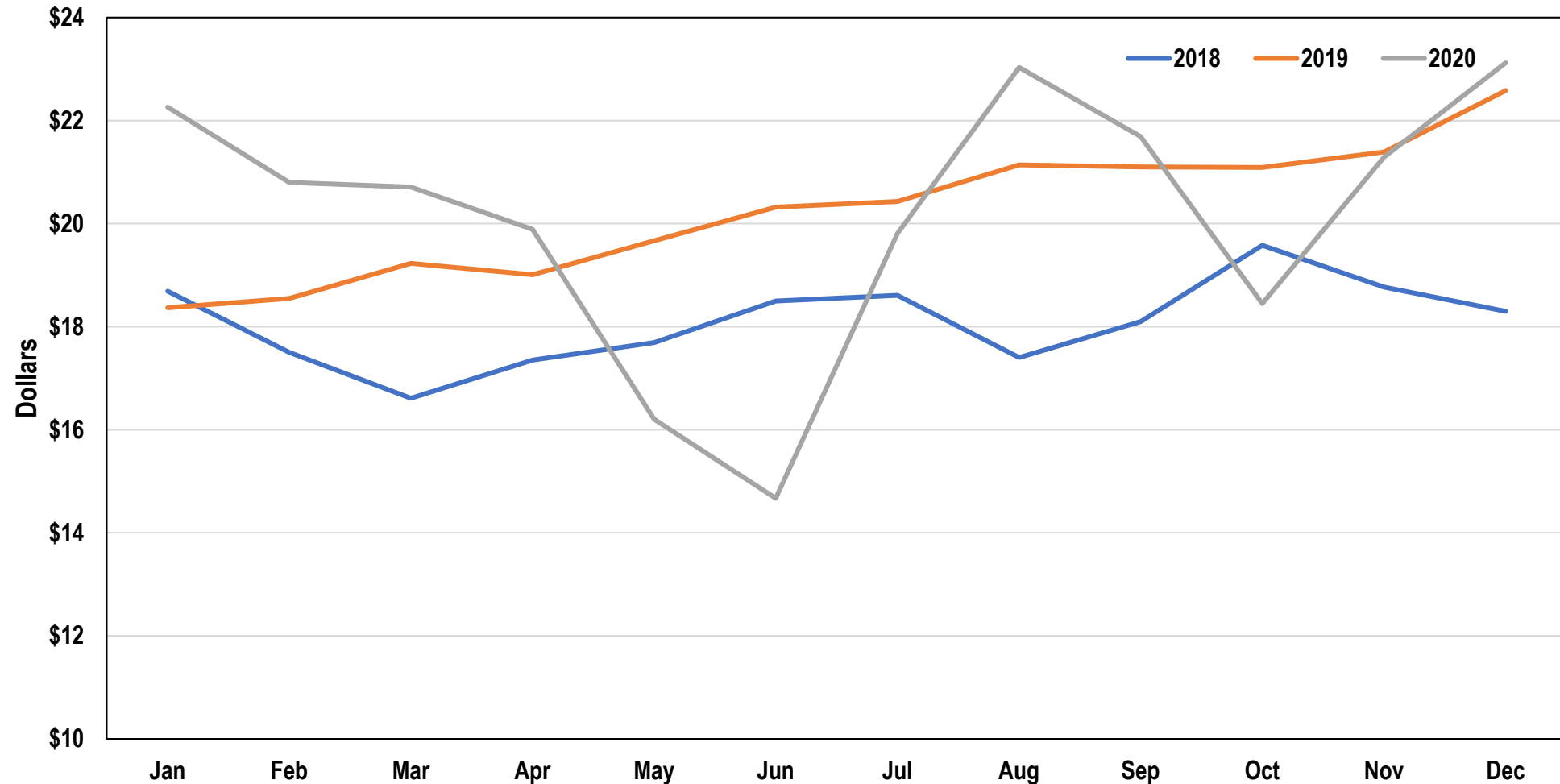
Vermont milk production



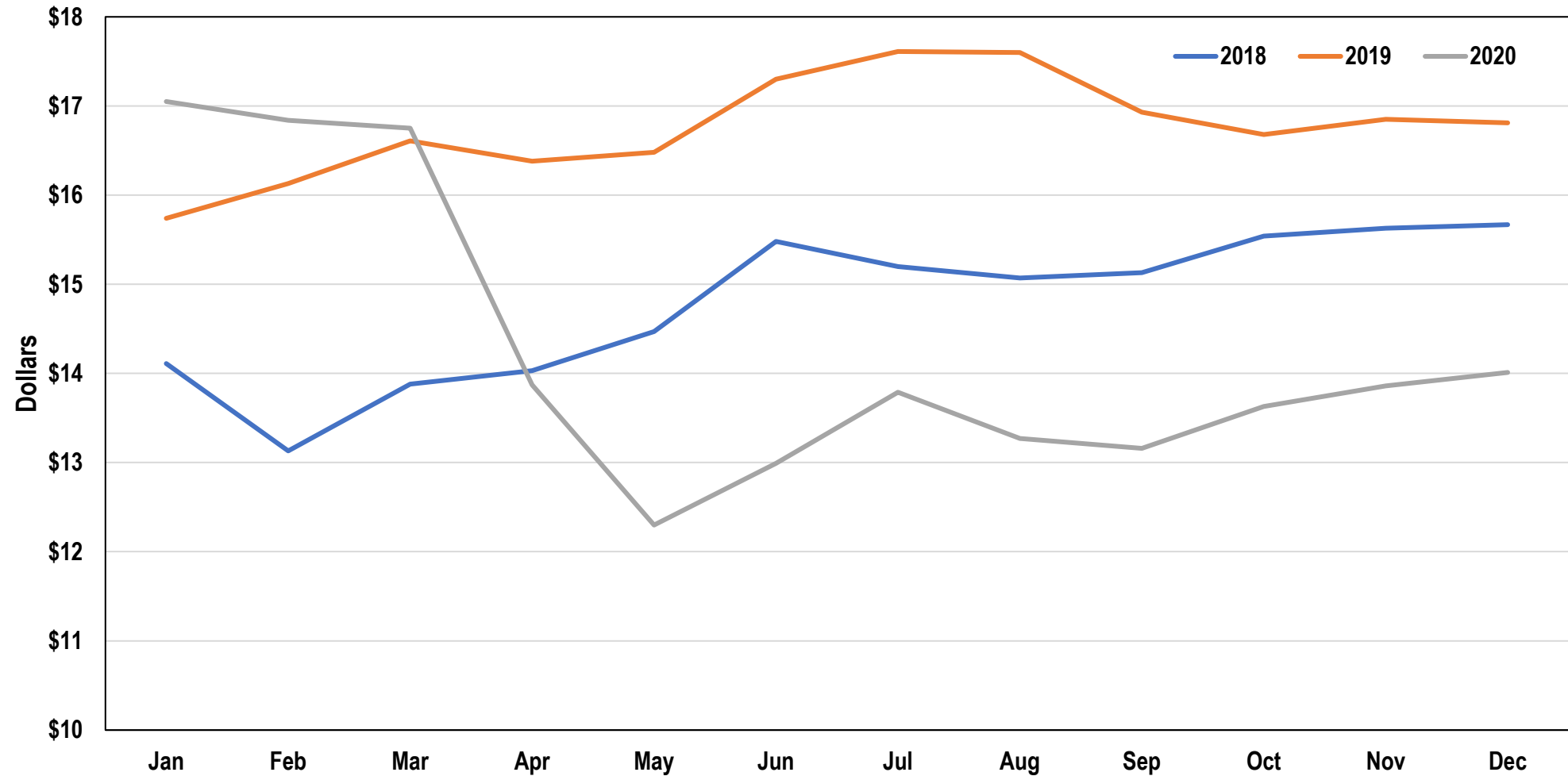
Submitted: February 5, 2021

PADC Exhibit 4

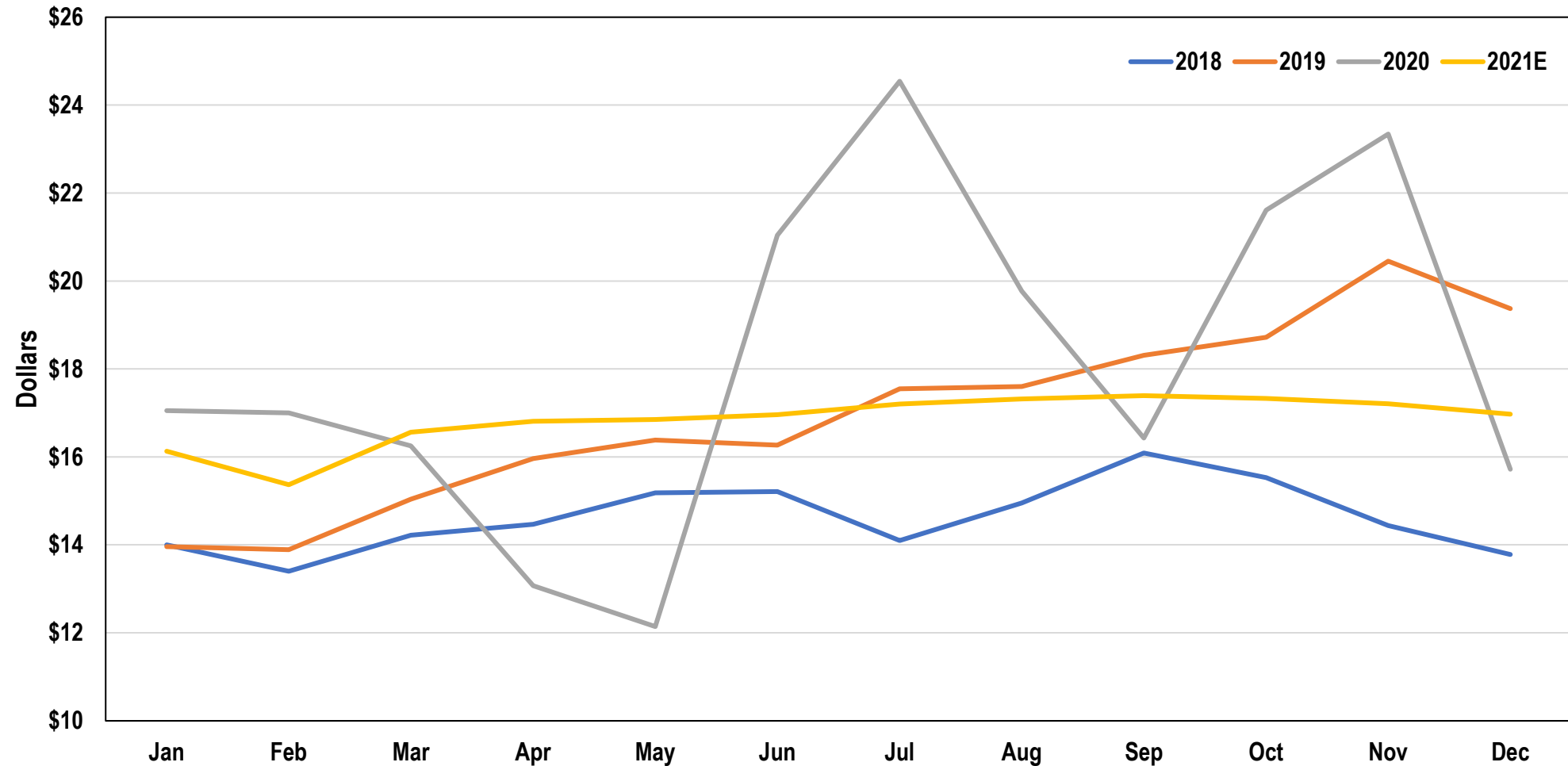
Federal Order 1 Class I Price



Federal Order 1 Class II Price



Federal Order 1 Class III Price

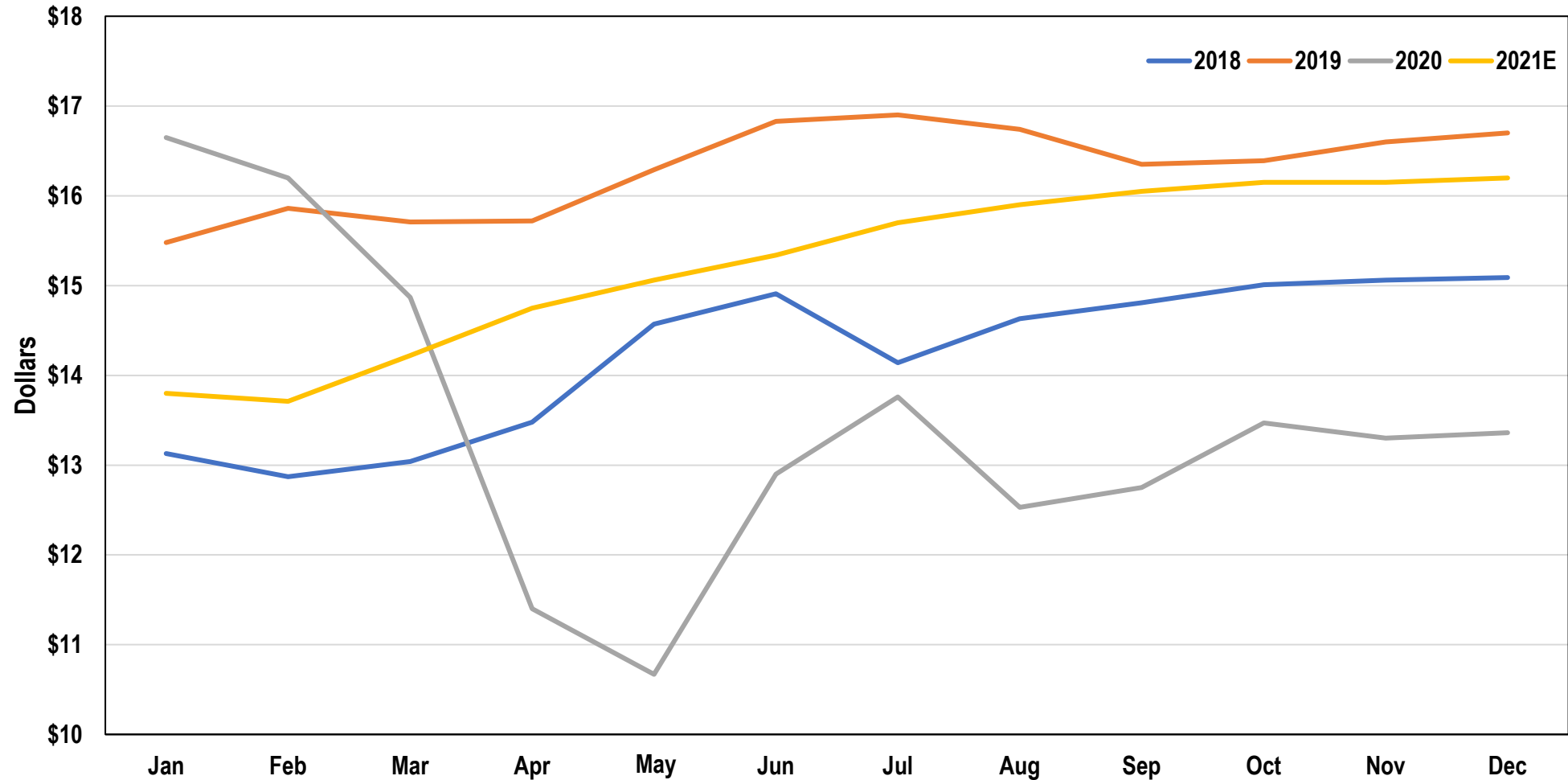


Submitted: February 5, 2021

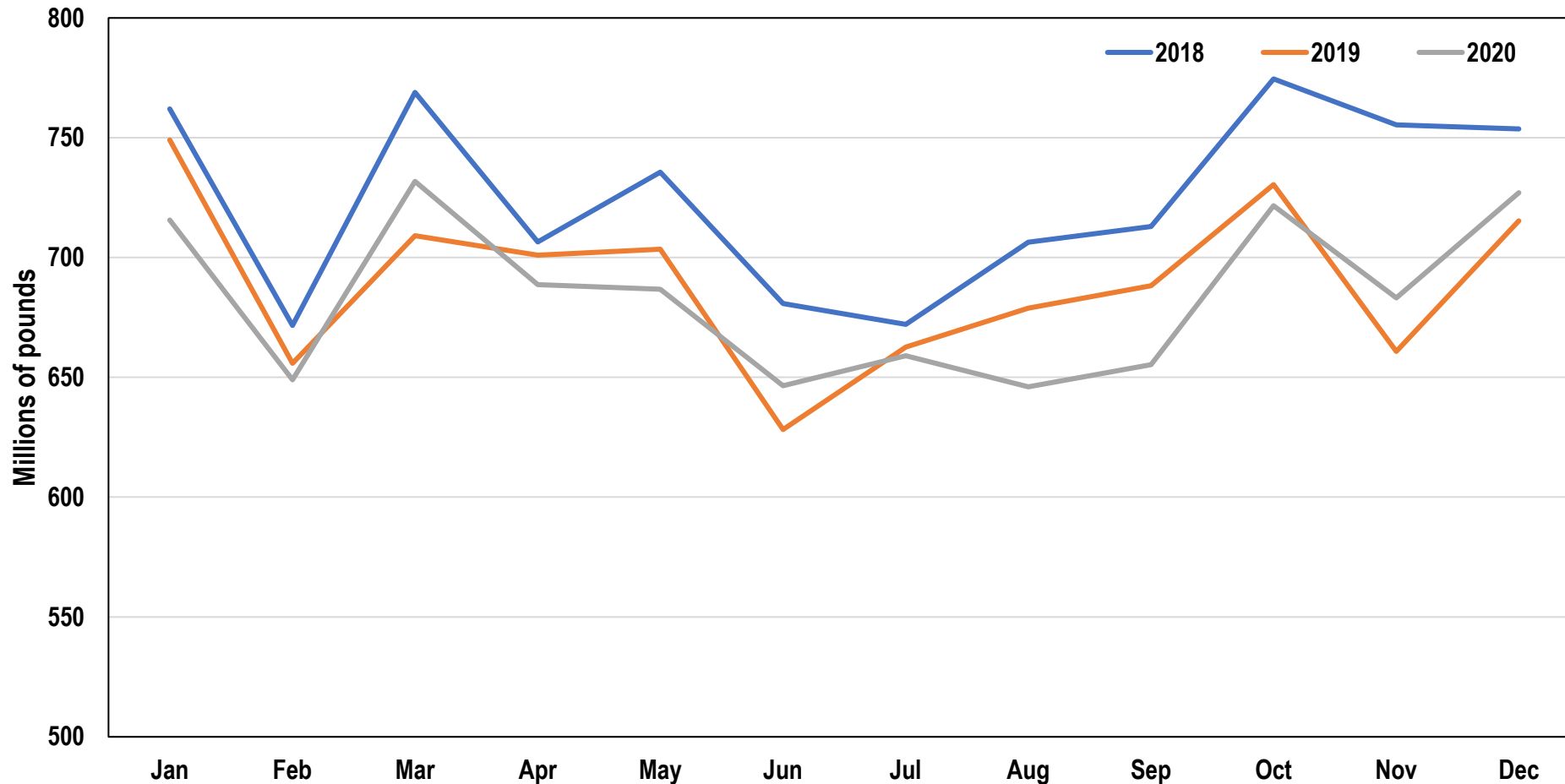
Jan-Dec 2021 projections based on CME

PADC Exhibit 7

Federal Order 1 Class IV Price

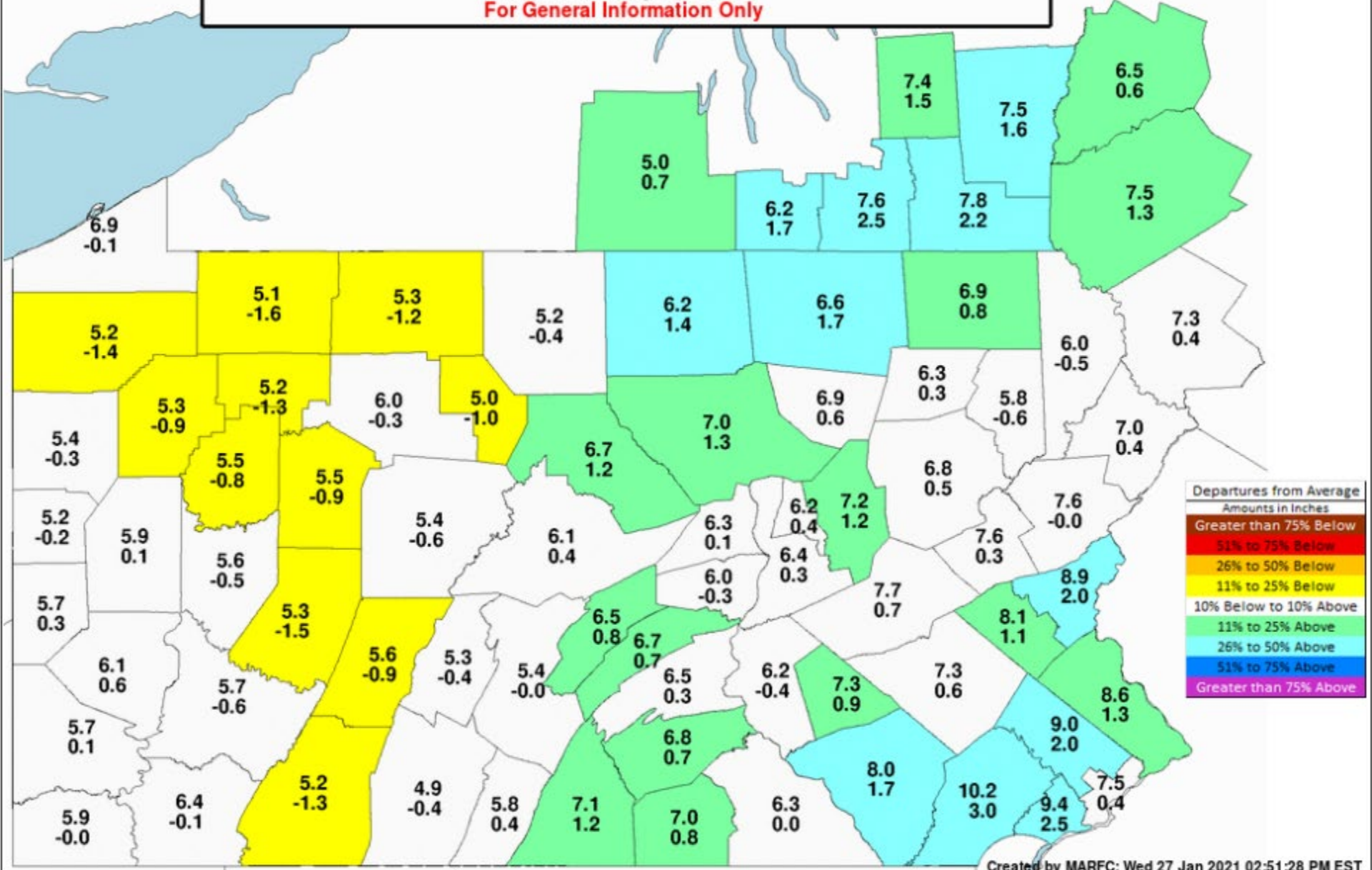


Federal Order 1 Class I Utilization



Total volume by year
2018: 8,700.8 million lbs.
2019: 8,283.1 million lbs.
2020: 8,210.7 million lbs.

60 Day Mean Areal Precipitation (top) and Departure From Average (bottom)
 11/28/2020 through 1/26/2021
 For General Information Only

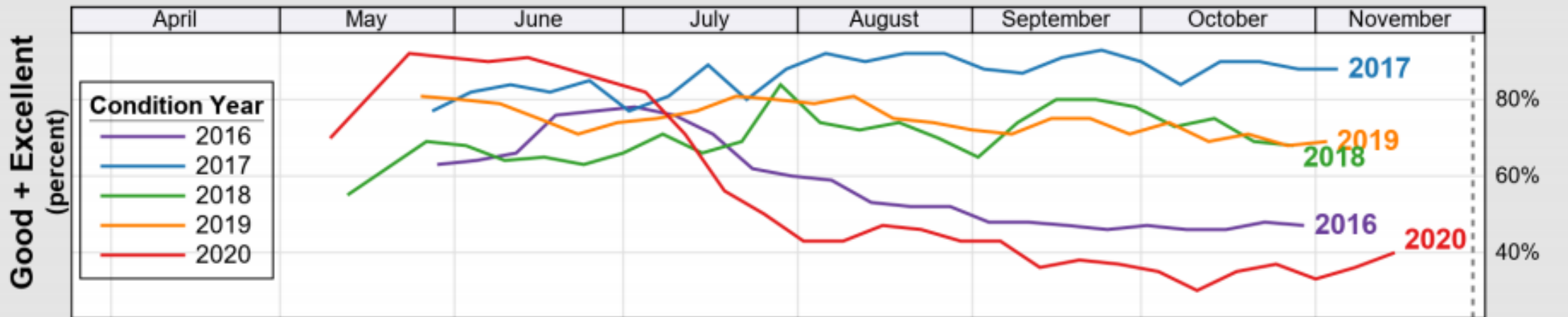


Created by MARFC: Wed 27 Jan 2021 02:51:28 PM EST

USDA

Crop Progress and Condition: Corn in Pennsylvania , 2020

NASS

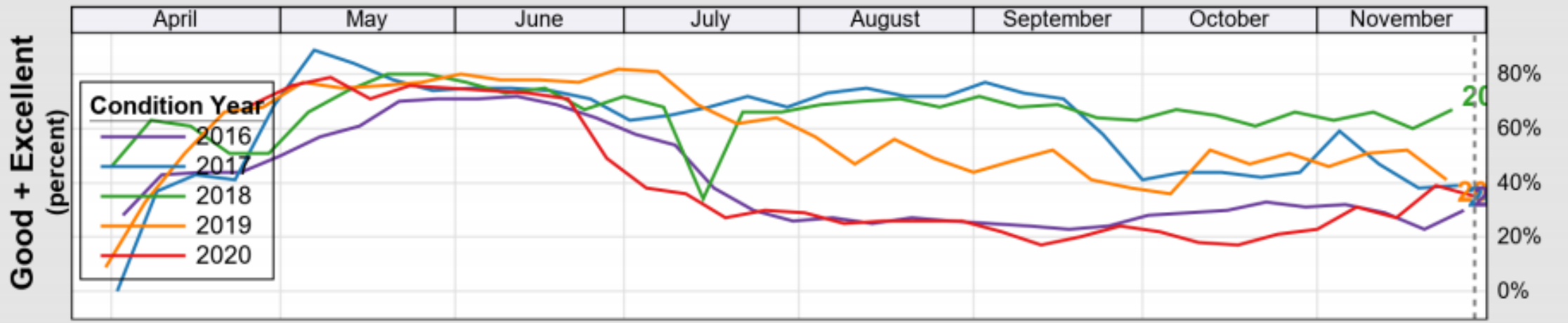


https://www.nass.usda.gov/Charts_and_Maps/Crop_Progress_&_Condition/2020/index.php

USDA

Crop Progress and Condition: Pasture and Range in Pennsylvania , 2020

NASS

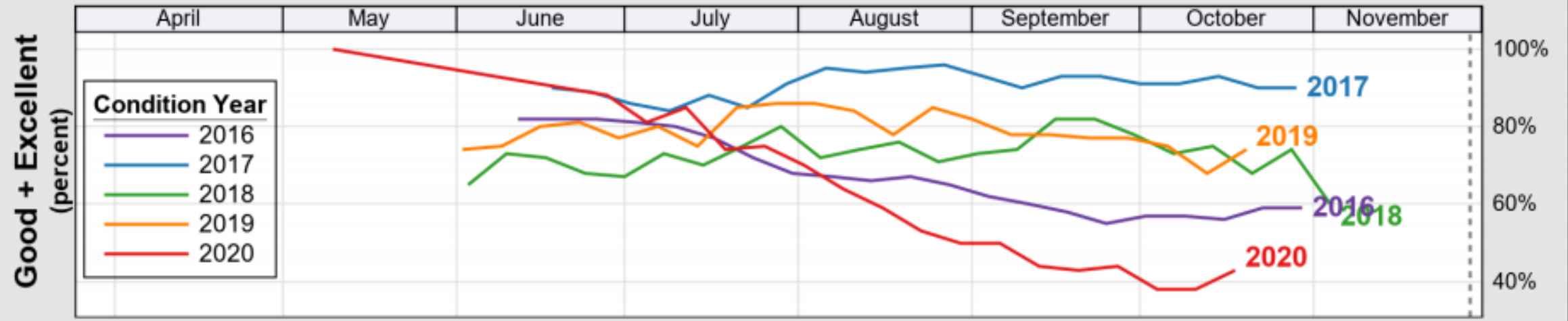


https://www.nass.usda.gov/Charts_and_Maps/Crop_Progress_&_Condition/2020/index.php

USDA

Crop Progress and Condition: Soybeans in Pennsylvania , 2020

NASS



https://www.nass.usda.gov/Charts_and_Maps/Crop_Progress_&_Condition/2020/index.php